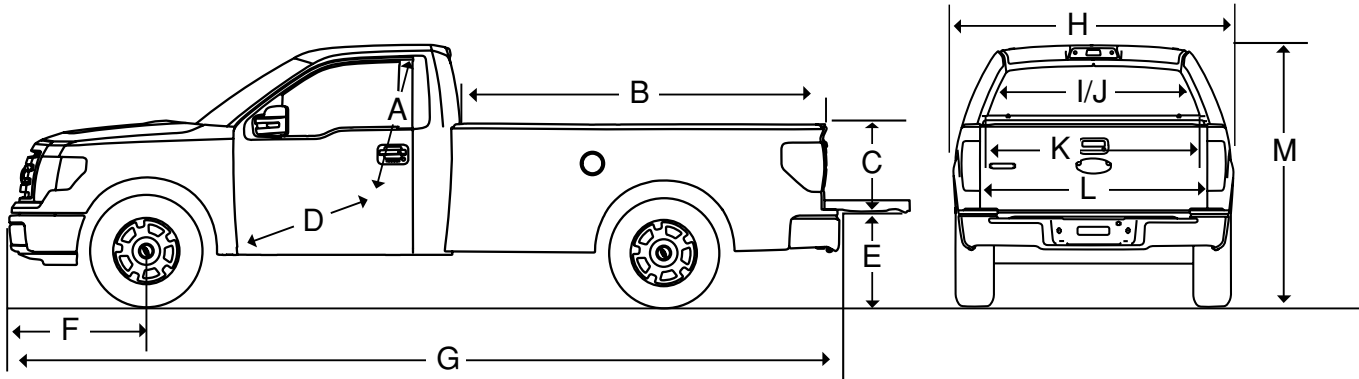


2011

F-150 and F-150 SVT Raptor

Dimensions



Body Dimensions

REGULAR CAB⁽¹⁾

Cargo Box (feet)	6.5	8.0	6.5	8.0
Drive	4x2		4x4	
Wheelbase (in.)	125.9	144.5	125.9	144.5
Code	Description	Inches	Inches	Inches
A	Head Room	41.0	41.0	41.0
B	Inside Length ⁽²⁾ (at floor)	78.8	97.4	78.8
C	Inside Height ⁽²⁾	22.4	22.4	22.4
D	Leg Room	41.4	41.4	41.4
E	Open Tailgate to Ground (Empty) ⁽³⁾	34.1	34.7	35.3
F	Front Overhang	38.3	38.3	38.3
G	Overall Length	213.2	231.8	213.2
H	Width (Max.) (excluding mirrors)	79.2	79.2	79.2
I	Shoulder Room	66.6	66.6	66.6
J	Hip Room	60.5	60.5	60.5
K	Width Between Wheelhouses ⁽²⁾	50.0	50.0	50.0
L	Max. Load Width ⁽²⁾ (at floor)	65.2	65.2	65.2
M	Cab Height (Empty) ⁽³⁾	74.8	75.6	76.0

(1) F-150 SVT Raptor not available as a Regular Cab model.

(2) Pickup box. Also refer to Pickup Box Dimensions.

(3) The height data shown represents dimensions of a nominal vehicle with no options. Actual height may vary due to production tolerances.

Interior Volume

Cab Position	Volume (cu. ft.)
Front Passenger	64.8
Rear Cargo (rear or front seat)	17.4

Fuel Tank Capacity

Wheelbase (in.)	Location	Capacity (gallons)	
		Standard	Optional
126	Midship	26.0	—
144.5	Midship	26.0	36.0 ⁽¹⁾

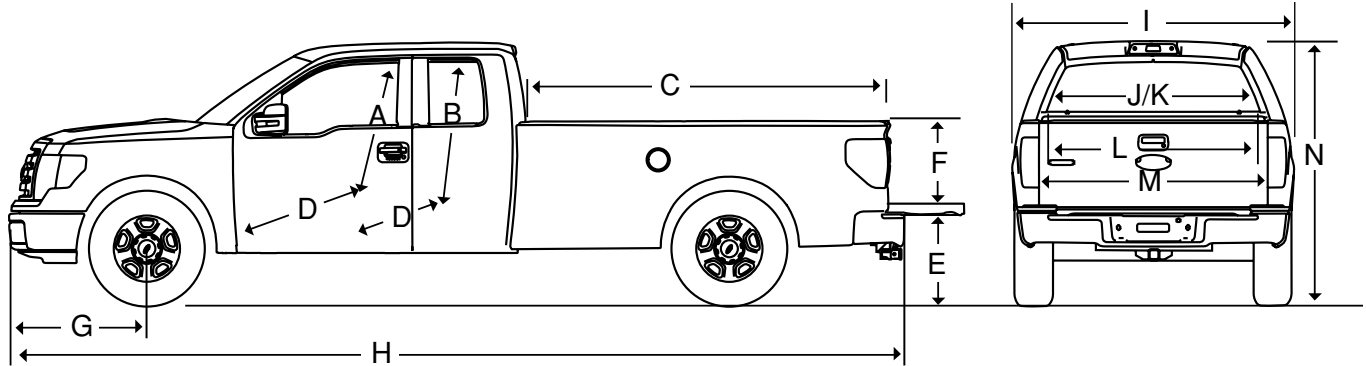
(1) Required on 4x4 with Heavy Duty Payload Package.

F-150 and
F-150 Raptor

F-150 and F-150 SVT Raptor

Dimensions cont'd

2011



Body Dimensions cont'd

SUPERCAB

Cargo Box (feet)	6.5	8.0	5.5	6.5	8.0
Drive	4x2		4x4		
Wheelbase (in.)	144.5	163.1	133.3 ⁽¹⁾	144.5	163.1
Code	Description		Inches	Inches	Inches
A	Head Room (Front)		41.0	41.0	41.0
B	Head Room (Rear)		39.7	39.7	39.7
C	Inside Length ⁽²⁾ (at floor)		78.8	97.4	67.0
D	Leg Room (Front)		41.4	41.4	41.4
	Leg Room (Rear)		33.4	33.4	33.4
E	Open Tailgate to Ground (Empty) ⁽³⁾		33.8	34.6	36.4
F	Inside Height ⁽²⁾		22.4	22.4	22.4
G	Front Overhang		38.3	38.3	38.0
H	Overall Length		231.8	250.4	220.6
I	Width (Max.) (excluding mirrors)		79.2	79.2	86.3
J	Shoulder Room (Front)		65.9	65.9	65.9
	Shoulder Room (Rear)		65.7	65.7	65.7
K	Hip Room (Front)		60.5	60.5	60.5
	Hip Room (Rear)		65.4	65.4	65.4
L	Width Between Wheelhouses ⁽²⁾		50.0	50.0	50.0
M	Max. Load Width ⁽²⁾ (at floor)		65.2	65.2	65.2
N	Cab Height (Empty) ⁽³⁾		75.2	75.8	78.5
					76.1
					76.7

(1) SVT Raptor.

(2) Pickup box. Also refer to Pickup Box Dimensions.

(3) The height data shown represents dimensions of a nominal vehicle with no options. Actual height may vary due to production tolerances.

Interior Volume

Cab Position	Volume (cu. ft.)	5.5-ft. box	6.5-ft. box	8.0-ft. box
Front Passenger		64.5	64.8	64.8
Rear Passenger		50.3	50.3	50.3
Total Passenger		114.8	114.8	114.8
Rear Cargo — Rear Seat Cushion Folded Up		40.9	40.9	40.9

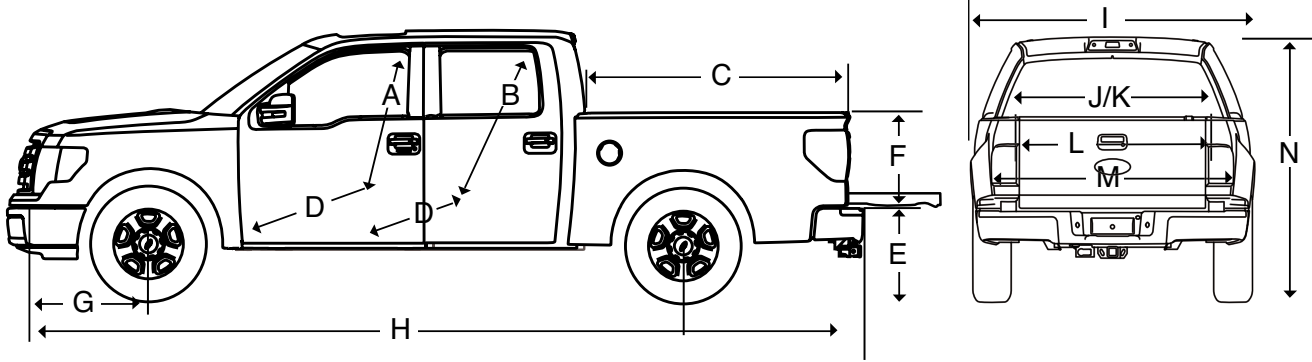
Fuel Tank Capacity

Wheelbase (in.)	Location	Capacity (gallons)	
		Standard	Optional
133.3 (4x4) ⁽¹⁾	Midship	26.0	—
144.5 (4x2/4x4)	Midship	26.0/36.0	36.0
163 (4x2/4x4)	Midship	26.0/36.0	36.0

(1) SVT Raptor.

F-150 and F-150 SVT Raptor

Dimensions cont'd



Body Dimensions cont'd SUPERCREW

Cargo Box (feet)	5.5	6.5	5.5	5.5 ⁽¹⁾	6.5
Drive	4x2		4x4	4x4	
Wheelbase (in.)	144.5	156.6	144.5	144.5	156.6
Code	Description	Inches	Inches	Inches	Inches
A	Head Room (Front)	41.0	41.0	41.0	41.0
B	Head Room (Rear)	40.3	40.3	40.3	40.3
C	Inside Length ⁽²⁾ (at floor)	67.0	78.8	67.0	78.8
D	Leg Room (Front)	41.4	41.4	41.4	41.4
	Leg Room (Rear)	43.5	43.5	43.5	43.5
E	Open Tailgate to Ground (Empty) ⁽³⁾	33.0	32.8	33.6	36.2
F	Inside Height ⁽²⁾	22.3	22.4	22.4	22.3
G	Front Overhang	38.3	38.3	38.3	38.0
H	Overall Length	231.9	243.9	231.9	243.9
I	Width (Max.) (excluding mirrors)	79.2	79.2	79.2	86.3
J	Shoulder Room (Front)	65.9	65.9	65.9	65.9
	Shoulder Room (Rear)	65.5	65.5	65.5	65.5
K	Hip Room (Front)	60.5	60.5	60.5	60.5
	Hip Room (Rear)	64.6	64.6	64.6	64.6
L	Width Between Wheelhouses ⁽²⁾	50.0	50.0	50.0	50.0
M	Max. Load Width ⁽²⁾ (at floor)	65.2	65.2	65.2	65.2
N	Cab Height (Empty) ⁽³⁾	74.8	74.6	75.9	78.5

(1) F-150 SVT Raptor.

(2) Pickup box. Also refer to Pickup Box Dimensions.

(3) The height data shown represents dimensions of a nominal vehicle with no options. Actual height may vary due to production tolerances.

Interior Volume

Cab Position	Volume (cu. ft.)	5.5' box	6.5' box
Front Passenger		64.8	64.9
Rear Passenger		66.8	66.4
Total Passenger		130.9	130.9
Rear Cargo — Rear Seat Cushion Folded-Up		62.3	59.9

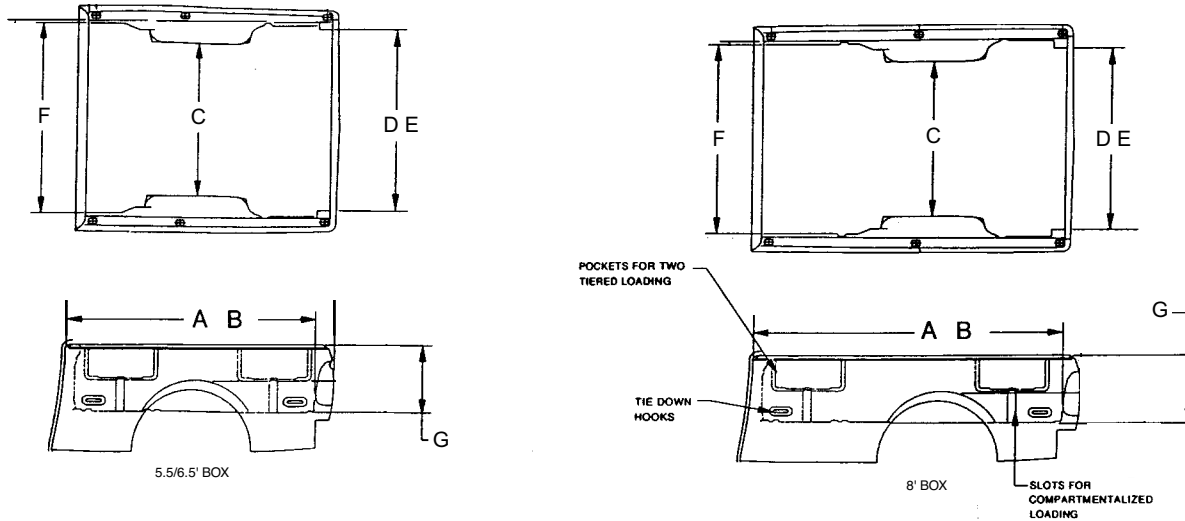
Fuel Tank Capacity

Wheelbase (in.)	Location	Capacity (gallons)	
		Standard	Optional
144.5 (4x2/4x4)	Midship	26.0/36.0	36.0
156.5 (4x2/4x4)	Midship	26.0/36.0	—

F-150 and F-150 SVT Raptor

Dimensions cont'd

2011



F-150 and
F-150 SVT Raptor

Pickup Box Dimensions STYLESIDE PICKUP

Box Size (ft.)		5.5 ⁽¹⁾	6.5 ⁽²⁾	8.0 ⁽³⁾
Code	Description	Inches	Inches	Inches
A	Cargo Body Length @ Floor	67.0	78.8	97.4
B	Cargo Body Length @ Top	65.8	77.6	96.1
C	Cargo Width @ Wheelhouse	50.0	50.0	50.0
D	Rear Opening Width @ Floor	60.3	60.3	60.3
E	Rear Opening Width @ Top	60.3	60.3	60.3
F	Cargo Body Maximum Inside Width	65.2	65.2	65.2
G	Cargo Body Height with Molding	22.4	22.4	22.4

(1) On 133.3" wheelbase SuperCab, 144.5" wheelbase SuperCrew and 144.5" Regular Cab.
 (2) On 126.0" wheelbase Regular Cab, 144.5" wheelbase SuperCab and 156.6" wheelbase SuperCrew.
 (3) On 144.5" wheelbase Regular Cab and 163.2" wheelbase SuperCab.

Cargo Box Volume

Pickup Box (ft.)	Volume (cu. ft.)
5.5 Styleside	55.4
6.5 Styleside	65.5
8.0 Styleside	81.3

NOTE: Does not include allowances for wheelhouses.

F-150 and F-150 SVT Raptor Weight Ratings

F-150 Styleside Pickup – GVWR/Payload/OPT & ARC/Spring & GAWR (Front Computer-Selected/Base Curb Weight)

Cab Style/ Drive/WB (in.)	Engine	Max. GVWR (lbs.)	Max. Payload (lbs.) ⁽¹⁾	OPT/ARC Weight (lbs.) ⁽²⁾	Spring/GAWR (lbs.) ⁽³⁾		Base Curb Weight (lbs.)		
					Front Min.	Rear	Front	Rear	Total
Regular Cab 4x2 126	3.7L	6450	1710	436	3150	3500	2675	2010	4685
	5.0L	6650	1820	430	3300	3500	2771	2011	4782
Regular Cab 4x4 126	3.7L	6650	1670	503	3450	3500	2905	2020	4925
	5.0L	6800	1720	495	3600	3500	2994	2030	5024
Regular Cab 4x2 145	3.7L	6750	1900	727	3450	3800	2812	1983	4795
	5.0L	7050	2100	726	3450	3850	2896	1996	4892
	3.5L	7050	2060	666	3600	3850	2948	1990	4938
HD Pkg.	3.5L	8200	3060	611	3750	4800	2969	2114	5083
	5.0L	8200	3060	671	3750	4800	2969	2114	5083
Regular Cab 4x4 145	3.7L	6950	1860	805	3600	3800	3038	1993	5031
	5.0L	7200	2040	792	3750	3850	3107	1998	5105
	3.5L	7200	2000	732	3750	3850	3115	2025	5140
HD Pkg.	3.5L	8200	2860	650	4050	4800	3153	2133	5286
	5.0L	8200	2770	650	4050	4800	3203	2165	5368
SuperCab 4x4 133 SVT Raptor	6.2L	7000	930	215	3900	3500	3406	2600	6006
SuperCab 4x2 145	3.7L	6700	1600	469	3450	3800	2884	2159	5043
	5.0L	7050	1820	703	3750	3850	2983	2186	5169
	3.5L	7050	1800	643	3750	3850	2996	2201	5197
MAX	3.5L	7500	2070	467	3750	4050	3043	2331	5374
SuperCab 4x4 145	3.7L	6900	1510	506	3750	3800	3126	2207	5333
	5.0L	7200	1680	718	4050	3850	3222	2239	5461
	3.5L	7200	1760	718	3900	3850	3182	2204	5386
MAX	3.5L	7700	2080	543	3900	4050	3231	2333	5564
SuperCab 4x2 163 HD Pkg.	5.0L	8200	2670	691	4050	4800	3159	2309	5468
	3.5L	8200	2670	641	4050	4800	3159	2310	5469
	5.0L	8200	2360	675	4050	4800	3378	2399	5777
SuperCab 4x4 163 HD Pkg.	3.5L	8200	2440	662	4050	4800	3326	2375	5701
	5.0L	8200	2440	662	4050	4800	3326	2375	5701
SuperCrew 4x2 145	3.7L	6800	1620	333	3450	3800	2885	2243	5128
	5.0L	7100	1800	538	3600	3850	2963	2282	5245
	3.5L	7100	1760	538	3600	3850	2989	2298	5287
Harley-Davidson/ Lariat Limited 4x2	6.2L	7250	1410	234	3600	3850	3201	2576	5767
SuperCrew 4x2 145 MAX	3.5L	7350	1880	410	3600	4050	3006	2409	5415
	6.2L	7350	1680	351	3600	4050	3119	2493	5612
SuperCrew 4x4 145	5.0L	7200	1560	553	3900	3850	3214	2363	5577
	3.5L	7200	1590	553	3900	3850	3184	2361	5545
SVT Raptor	6.2L	7300	1030	215	4000	3700	3541	2659	6200
Harley-Davidson/ Lariat Limited AWD	6.2L	7350	1230	336	3850	3850	3419	2633	6052
SuperCrew 4x4 145 MAX	6.2L	7700	1770	404	3900	4050	3335	2531	5866
	3.5L	7650	1960	473	3900	4050	3184	2441	5625
SuperCrew 4x2 157	5.0L	7100	1660	619	3750	3850	3076	2302	5378
	3.5L	7100	1670	613	3750	3850	3094	2280	5374
MAX	3.5L	7550	2000	491	3750	4050	3111	2381	5492
SuperCrew 4x4 157	5.0L	7350	1570	677	4050	3850	3307	2409	5716
	3.5L	7350	1620	670	4050	3850	3300	2365	5665
MAX	3.5L	7700	1890	590	4050	4050	3300	2445	5745

(1) Load rating represents maximum allowable weight of people, cargo and body equipment and is reduced by optional equipment weight.

(2) OPT/ARC Weight is the maximum allowable weight for regular production options (OPT) and aftermarket equipment Accessory Reserve Capacity (ARC) for models with standard equipment and the engine/transmission combination indicated.

(3) Gross Axle Weight Rating (GAWR) is determined by the rated capacity of the minimum component of the axle system (axle, computer-selected springs, wheels, tires) of a specific vehicle. Front and rear GAWRs will, in all cases, sum to a number equal to or greater than the GVWR for the particular vehicle. Maximum loaded vehicle (including passengers, equipment and payload) cannot exceed the GVWR.

NOTE: Refer to pages 85–86 for Standard Powertrain/Chassis Equipment Specifications. See the Truck Payload section in the Source Book Appendices or on eSourceBook for optional equipment weights.

F-150 and F-150 SVT Raptor

Standard Powertrain/Chassis Equipment Specifications

2011

F-150 and
F-150 SVT Raptor

F-150 4x2 Styleside Pickup

DRIVE:		4x2 ^(1,2)
POWERTRAIN:		Refer to the Ordering Guide for 50 States Usage
Engine	— Type	3.7L 4V SEFIV6
Transmission	— Type	6R80E 6-speed Auto OD
AXLES:		
Front Axle	— Type	Long-Spindle Double-Wishbone, Coil-Over-Shock IFS
	— Capacity (Rating @ Ground)	3150 lbs.
Rear Axle	— Type	Semi-Floating
	— Capacity (Rating @ Ground)	3500 lbs.
BRAKES:		
Front/Rear Disc	— Type	Vented, Twin-Piston Front and Single-Piston Rear Caliper
	— Rotor Diameter—Front/Rear	13.7"/13.7"
Power Assist Unit	— Type	Tandem-Diaphragm
	— Effective Diameter	9.07" Front/8.98" Rear
Anti-Lock System		4-Wheel (4-Channel with Electronic Brake Force Distribution)
Parking Brake (Rear Brakes)		Foot-Operated, Hand Release
ELECTRICAL:		
Alternator	— Rating	155 Amp, 2100 Watt/220 Amp, 3000 Watt
Battery	— Type	Maintenance-Free (Battery Saver System Standard)
	— Rating	78 Amp-hr., 750 CCA
Harnesses	— Type	3-Pin Connector
FUEL TANK:	— Capacity	26.0 Gal. (98 L)
JACK:	— Capacity	2 Ton
STEERING:	— Type	Power, Rack-and-pinion
	— Ratio	20.0:1 126" WB, 145" WB and 157" WB (with Max Trailer Tow), 17.0:1 157" WB (without Trailer Tow) and 163" WB
SUSPENSION:		
Frame	— Type	Ladder Type with Fully Boxed Side Rails and Hydroformed Front Section, 7 Crossmembers, 36,000 psi Steel with 156.5" WB SuperCrew/ 163.0" WB SuperCab 49,300 psi Steel with 126.0", 144.5" WB Regular Cab, 144.5" WB SuperCab/ 144.5" WB SuperCrew
	— Section Modulus (cu. in.)	5.35 with 126.0" WB Regular Cab/SuperCab; 5.70 with 144.5" WB Regular Cab/SuperCab/SuperCrew; 7.20 with 156.5" WB SuperCrew/ 163.0" WB SuperCab
Springs, Front	— Type	Coil, Computer Selected
	— Rating @ Ground (min.)	Refer to page 84 for usage and ratings
Springs, Rear	— Type	Leaf, Two-Stage Variable Rate, Computer Selected
	— Rating @ Ground (min.)	Refer to page 84 for usage and ratings
Shock Absorbers	— Gas-Type	Front 1.42"/Rear 1.26" (Specially Tuned with 8200-lb. GVWR)
Stabilizer Bar	— Position/Diameter/Type	Front/1.34"/Solid Steel
TIRES:	— Type	Steel-Belted Radial All-Season Less 8200-lb. GVWR; Steel-Belted Radial All-Terrain with 8200-lb. GVWR
	— Size	Five P235/75R17 BSW Less 8200-lb. GVWR; Five LT245/75R17E BSW with 8200-lb. GVWR
	— Spare Tire Carrier	Rear Underframe, Winch-Type with Safety Catch (Locking-Type, Lock Cylinder in Rear Bumper Opened by Ignition Key)
WHEELS:	— Type and Size	Four 17" x 7.5" Grey Styled Steel with Same Size Steel Spare (6-Hole Disc); Five 17" x 7.5" 7-Lug Steel (7-Hole Disc) with 8200-lb. GVWR

(1) 8200-lb. GVWR is included with the optional Heavy Duty Payload Package and requires either the 5.0L 4V V8 or 3.5L 4V V6 engine. In addition to the equipment listed above, this package also includes Super Engine Cooling, 9-channel oil-to-air auxiliary transmission oil cooler, frame upgrade (.150 rail thickness).

(2) Refer to notes below for powertrain/chassis upgrades included with optional trim levels.

NOTE: STX powertrain/chassis upgrades: P255/65R17 OWL A/S tires and 17" x 7.5" machined aluminum wheels.

NOTE: XLT powertrain/chassis upgrades (Standard trim with SuperCrew): P255/65R17 OWL A/S tires on SuperCrew and 17" x 7.5" machined aluminum wheels on all models.

NOTE: Lariat powertrain/chassis upgrades: 6.2L 2V V8/6R80E 6-Speed Auto OD, P265/60R18 OWL A/S tires on 18" x 7.5" bright aluminum wheels.

NOTE: Refer to page 84 for Standard & Optional Weight Rating Specifications (GVWR/Payload/Spring & GAWR/Base Curb Weight).

F-150 and F-150 SVT Raptor

Standard Powertrain/Chassis Equipment Specifications cont'd

F-150 4x4 Styleside Pickup

DRIVE:		4x4 ^(1, 2)
POWERTRAIN:		Refer to the Ordering Guide for 50 States Usage
Engine	— Type	3.7L 4V DOHC V6
Transmission	— Type	6R80E 6-Speed Auto OD
Transfer Case	— Type	B.W. 44-06 Part-time Manual Shift; Electronic Shift with SuperCrew
	— Low/High Gear Ratio	2.64:1/1.00:1
AXLES:		
Front Axle	— Type	Long-Spindle Double-Wishbone, Coil-Over-Shock IFS (Center Disconnect)
	— Capacity (Rating @ Ground)	3450 lbs.
Rear Axle	— Type	Semi-Floating
	— Capacity (Rating @ Ground)	3500 lbs., 4800 lbs. with 8200-lb. GVWR
BRAKES:		
Front/Rear Disc	— Type	Vented, Twin-Piston Front and Single Piston Rear Caliper
	— Rotor Diameter—Front/Rear	13.7"/13.7"
Power Assist Unit	— Type	Tandem-Diaphragm
	— Effective Diameter	9.07" Front/8.98" Rear
Anti-Lock System		4-Wheel (4-Channel with Electronic Brake Force Distribution)
Parking Brake (Rear Brakes)		Foot-Operated, Hand Release
ELECTRICAL:		
Alternator	— Rating	155 Amp, 2100 Watt/220 Amp, 3000 Watt
Battery	— Type	Maintenance-Free (Battery Saver System Standard)
	— Rating	78 Amp-hr., 750 CCA
Harnesses	— Type	3-Pin Connector
FUEL TANK:	— Capacity	26.0 Gal. (98 L)
JACK:	— Capacity	2 Ton
STEERING:	— Type	Power, Rack-and-Pinion
	— Ratio	20.0:1 126" WB, 133" WB, 145" WB and 157" WB (with Max Trailer Tow), 17.0:1 157" WB (without Trailer Tow) and 163" WB
SUSPENSION:		
Frame	— Type	Ladder Type with Fully Boxed Side Rails and Hydroformed Front Section, 7 Crossmembers, 36,000 psi Steel with 156.5" WB SuperCrew/163.0" WB SuperCab/49,300 psi Steel with 126.0", 144.5" WB Regular Cab/132.5" WB, 144.5" WB SuperCab/144.5" WB SuperCrew
	— Section Modulus (cu. in.)	5.35 with 126.0" WB Regular Cab/SuperCab; 5.70 with 144.5" WB Regular Cab/ SuperCab/SuperCrew; 7.20 with 156.5" WB SuperCrew/163.0" WB SuperCab
Springs, Front	— Type	Coil, Computer Selected
	— Rating @ Ground (min.)	Refer to page 84 for usage and ratings
Springs, Rear	— Type	Leaf, Two-Stage Variable Rate, Computer Selected
	— Rating @ Ground (min.)	Refer to page 84 for usage and ratings
Shock Absorbers	— Gas-Type	Front 1.42"/Rear 1.26" (Specially Tuned with 8200-lb. GVWR)
	— By-Pass	Front 1.85"/1.85" (SVT Raptor only)
Stabilizer Bar	— Position/Diameter/Type	Front 1.34"/Solid Steel Front 1.08"/Solid Steel (SVT Raptor only)
TIRES:	— Type	Steel-Belted Radial All-Terrain
	— Size	Five P235/75R17 BSW Less 8200-lb. GVWR; Five LT245/75R17E BSW with 8200-lb. GVWR; Five LT315/70R17 BSW (SVT Raptor)
	— Spare Tire Carrier	Rear Underframe, Winch-Type with Safety Catch (Locking-Type, Lock Cylinder in Rear Bumper Opened by Ignition Key)
WHEELS:	— Type and Size	Four 17" x 7.5" Grey Styled Steel with Same Size Steel Spare (6-Hole Disc); Five 17" x 7.5" 7-Lug Steel (7-Hole Disc) with 8200-lb. GVWR; Five 17" x 8.5" aluminum (6-hole) (SVT Raptor)

(1) 8200-lb. GVWR is included with the optional Heavy Duty Payload Package and requires either the 5.0L 4V V8 or 3.5L 4V V6 engine and 36-gallon fuel tank. In addition to the equipment listed above, this package also includes Super Engine Cooling, 9-channel oil-to-air auxiliary transmission oil cooler, frame upgrade (.150 rail thickness) and 3.73 axle ratio.

(2) Refer to notes below for powertrain/chassis upgrades included with optional trim levels.

NOTE: STX powertrain/chassis upgrade: P265/70R17 OWL A/T tires and 17" x 7.5" machined aluminum wheels.

NOTE: XLT powertrain/chassis upgrades (Standard trim with SuperCrew): P265/70R17 OWL A/T tires on SuperCrew and 17" x 7.5" machined aluminum wheels on all models.

NOTE: FX4 powertrain/chassis upgrades: 5.0L 4V V8/6R80E 6-Speed Auto OD, P275/65R18 OWL A/T tires, 18" x 7.5" machined cast aluminum wheels, electronic shift transfer case, skid plates and off-road-tuned shock absorbers.

NOTE: Lariat powertrain/chassis upgrades: 5.0L 4V V8/6R80E 6-Speed Auto OD, P275/65R18 OWL A/T tires, 18" x 7.5" bright aluminum wheels and electronic shift transfer case.

NOTE: Refer to page 84 for Standard & Optional Weight Rating Specifications (GVWR/Payload/Spring & GAWR/Base Curb Weight).

F-150 and F-150 SVT Raptor

Technical Specifications

2011

F-150 and
F-150 SVT Raptor

Axle

FRONT AXLE SPECIFICATIONS

Series/Model	F-150 4x2	F-150 4x4	F-150 SVT Raptor
Type	Long-Spindle Double-Wishbone, Coil-Over-Shock Independent Front Suspension		
Max. Rating @ Ground (lbs.)	3750	4050	3750/4000 ⁽¹⁾
Upper Control Arm	– Material	Forged Steel	
Lower Control Arm	– Material	Stamped Steel	Cast Aluminum
Spring	– Type	Coil-over-Shock, Computer Selected	
Ball Joints		Lubed-for-Life	
Spindle	– Material	Nodular Cast Iron Body with Forged Steel Stem	Nodular Cast Iron
Wheel Bearings	– Type	Tapered Roller (GEN I Cartridge)	Tapered Roller (GEN 2 Flange)

REAR AXLE SPECIFICATIONS

Series	F-150	F-150	F-150 SVT Raptor
Make	Standard/Limited-Slip/Electronic Locking		
Max. Rating @ Ground (lbs.) (Engine)	3800	4000	4800
Type	Semi-Float Beam Axle		
Drive	Hotchkiss		
Housing	– Type	Cast Center	
	– Cover Attachment	Bolted	
Lubricant Capacity (pt.)		5.5-5.8	5.25–5.5 (Limited Slip)
Wheel Bearings	– Type	Straight Roller	
Gears	– Type	Hypoid	
	– Material	Alloy Steel	
Ring Gear	– Pitch Diameter (in.)	8.80	9.75
Axle Ratios		3.15, 3.31, 3.55, 3.73	3.55, 3.73
Pinion	– Mounting	Overhung	4.10
Differential	– Type	2-Pinion	
	– Bearings	Tapered Roller	
Axle Shaft	– Minimum Diameter (in.)	1.29	
	– Diameter over Splines (in.)	1.32	
	– No. of Splines (Hub End)	31	34

(1) SuperCrew.

Brakes

HYDRAULIC BRAKE EQUIPMENT SPECIFICATIONS — FRONT DISC

Type	Model	Axle Usage (lbs.)	Rotor Dia. (in.)		Brake Lining Segment	Area (sq. in.)/ Width (in.)/ Thickness (in.)	Caliper Piston Dia. (in.)	Gross Lining Area Per Axle (sq. in.)	Total Swept Area Per Axle (sq. in.)
Disc	All	4150, 4400	13.78	9.33	Outboard	9.99/2.53/0.55	Dual 2.125	40.6	297.5
					Inboard	10.36/2.53/0.55			

HYDRAULIC BRAKE EQUIPMENT SPECIFICATIONS — REAR DISC

Type	Model	Axle Usage (lbs.)	Rotor Dia. (in.)		Brake Lining Segment	Area (sq. in.)/ Width (in.)/ Thickness (in.)	Caliper Piston Dia. (in.)	Gross Lining Area Per Axle (sq. in.)	Total Swept Area Per Axle (sq. in.)
Disc	All	3850, 4000, 4800	13.7	10.24	Outboard	4.17/1.42/0.45	Single	16.68	255.7
					Inboard	4.17/1.42/0.45	2.000		

BRAKE MASTER CYLINDER SPECIFICATIONS

Type	Bore Dia. (in.)
Dual Bore	1.187–1.370

F-150 and F-150 SVT Raptor

Technical Specifications cont'd

Brakes (cont'd)

POWER BRAKES VACUUM BOOSTER SPECIFICATIONS

Make/Type	Effective Dia. (in.)	Outside Dia. (in.)	Diaphragm Type
Dash Mounted	9.07 Front/8.98 Rear	9.93 Max. OD	Tandem

Cooling Systems

COOLING SYSTEM SPECIFICATIONS

Engine	Radiator Usage ⁽¹⁾	Frontal Area (sq. in.)	Core Size (in.)			Rows of Tubes	Fins Per Inch	Cooling System Cap. (approx. qts.)	Fan (Nylon)	
			Height	Width	Thick.				Diameter (in.)	No. of Blades
3.7L V6	Standard	521	16.54	31.50	0.94	41	15.2	15.0	14.0/14.8	5/5
	Super Cooling ⁽²⁾	521	16.54	31.50	1.26	41	16.5	16.0	14.0/14.8	5/5
5.0L V8	Standard	521	16.54	31.50	0.94	41	15.2	16.0	14.0/14.8	5/5
	Super Cooling ⁽³⁾	521	16.54	31.50	1.26	41	16.5	17.0	14.0/14.8	5/5
6.2L V8	Standard	NA	NA	NA	NA	NA	NA	NA	NA	NA
	Super Cooling ⁽⁴⁾	521	16.54	31.50	1.26	51	16.5	19.5	14.0/14.8	5/5
3.5L V6	Standard	521	16.54	31.50	1.26	41	16.5	16.0	14.0/14.8	5/5
	Super Cooling ⁽⁵⁾	521	16.54	31.50	1.26	51	16.5	16.5	14.0/14.8	5/5

(1) All radiators include in-tank oil-to-water transmission oil cooler.

(2) Included with Trailer Towing Package (Class IV) only.

(3) Included with Trailer Towing Package (Class IV) or Heavy Duty Payload Package only.

(4) 6.2L Super Cooling radiator is released for all payload packages. No base or standard radiator is used.

(5) Included with Max Trailer Tow Package.

AUXILIARY AUTOMATIC TRANSMISSION OIL COOLER APPLICATIONS

Engine	Transmission	Cooler Applications		
		Standard	Trailer Towing Package (Class IV)	Heavy Payload Group
3.7L V6	6R80E	4-Channel	4-Channel	—
5.0L V8	6R80E	4-Channel	4-Channel	—
6.2L V8	6R80E	4-Channel	4-Channel	4-Channel
3.5L V6	6R80E	4-Channel	4-Channel	4-Channel

Fuel System

FUEL SYSTEM DATA

Electronic Fuel Injection	3.7L 4V SEFI V6	Sequential Multiport Fuel Injection
	5.0L 4V SEFI V8	Sequential Multiport Fuel Injection
	6.2L 2V SEFI V8	Sequential Multiport Fuel Injection
	3.5L 4V SEFI V6	Sequential Direct Fuel Injection
Fuel Pump	3.7L, 5.0L, 6.2L	Single Electric In-Tank High-Pressure
	3.5L	In-Tank Electric High-Pressure Engine-mounted Booster
Fuel Filter	All Engines	In-Tank Lifetime
Air Cleaner	All Engines	Dry Element, Replaceable

NOTE: SEFI = Sequential Electronic Fuel Injection.

F-150 and F-150 SVT Raptor

Technical Specifications cont'd

2011

F-150 and
F-150 SVT Raptor

Steering

STEERING SPECIFICATIONS

Model	Wheelbase (in.)	Rack-and-pinion Power Steering ⁽¹⁾		Turning Diameter (ft.)
		Rack Speed (Millimeters Per Revolution)	Rack Ratio	Curb-to-Curb
Regular Cab	126.0	47.4	20.0:1	41.7
	144.5	47.4	20.0:1	47.0
SuperCab	133.3 (SVT Raptor)	47.4	20.0:1	44.6
	144.5 (4.6 2V 4x4)	47.4	20.0:1	47.0
	144.5 (all others)	54.5	17.0:1	47.0
	144.5 (w/Max Trailer Tow)	47.4	20.0:1	47.0
	163.0	54.5	17.0:1	52.3
SuperCrew	144.5	54.5	17.0:1	47.0
	144.5 (w/Max Trailer Tow)	47.4	20.0:1	47.0
	156.5	54.5	17.0:1	50.4
	156.5 (w/Max Trailer Tow)	47.4	20.0:1	50.4

(1) All gears include nibble damper.

Suspensions

FRAME SPECIFICATIONS

Model	Wheelbase (in.)	No. of Crossmembers	Maximum Side Rail Section (in.)	Section Modulus (cu. in.)	Yield Strength (psi)
Regular Cab 4x2 ⁽¹⁾	126.0	7	8.86 x 2.95 x .100	5.35	49,300
	144.5	7	8.86 x 2.95 x .110	5.70	49,300
Regular Cab 4x4 ⁽¹⁾	126.0	7	8.86 x 2.95 x .100	5.35	49,300
	144.5	7	8.86 x 2.95 x .110	5.70	49,300
SuperCab 4x2 ⁽¹⁾	144.5	7	8.86 x 2.95 x .110	5.70	49,300
SuperCab 4x4 ⁽¹⁾	133.3 (SVT Raptor)	7	8.86 x 2.95 x .100	5.35	49,300
	144.5	7	8.86 x 2.95 x .110	5.70	49,300
SuperCrew 4x2	144.5	7	8.86 x 2.95 x .110	5.70	49,300
SuperCrew 4x2	156.5	7	8.86 x 2.95 x .150	7.20	36,000
SuperCrew 4x4 ⁽²⁾	144.5	7	8.86 x 2.95 x .110	5.70	49,300
SuperCrew 4x4	156.5	7	8.86 x 2.95 x .150	7.20	36,000
Regular Cab 4x2 ⁽³⁾	144.5	7	8.86 x 2.95 x .150	7.20	36,000
Regular Cab 4x4 ⁽³⁾	144.5	7	8.86 x 2.95 x .150	7.20	36,000
SuperCab 4x2 ⁽³⁾	163.0	7	8.86 x 2.95 x .150	7.20	36,000
SuperCab 4x4 ⁽³⁾	163.0	7	8.86 x 2.95 x .150	7.20	36,000

(1) Except Heavy Duty Payload Package.

(2) Includes SVT Raptor SuperCrew.

(3) With Heavy Duty Payload Package only.

F-150 and F-150 SVT Raptor

Technical Specifications cont'd

Suspensions cont'd

SHOCK ABSORBER SPECIFICATIONS

Usage	Front			Rear		
	No. Used	Piston Dia. (in.)	Type	No. Used	Piston Dia. (in.)	Type
Standard ⁽¹⁾	2	1.42	Gas-Pressurized	2	1.26	Gas-Pressurized
SVT Raptor	2	1.85	Internal By-Pass	2	1.85	Internal Bypass

(1) Specially tuned shocks included with FX4, Heavy Payload Group and are required on Lariat and King Ranch 4x2 with 20" 6-spoke machined aluminum wheels. (Piston diameters remain the same as above.)

SPRING SPECIFICATIONS — FRONT COIL

Model	Combined Rating @ Ground (lbs.)	Norm. Working Height of Spring (in.)	Inside Dia. (in.)	Wire Dia. (in.)	Deflection Rate @ Ground (lbs. per in. ea.)
4x2/4x4 ⁽¹⁾	3150	12.0	4.0	.659	394
	3300	12.0	4.0	.679	434
	3450	12.0	4.0	.693	474
	3600	12.0	4.0	.707	514
	3750	12.0	4.0	.724	554
	3900	12.0	4.0	.734	593
4x2/4x4 ⁽²⁾	3750	12.0	4.0	.754	714
	4050	12.0	4.0	.759	714
	SVT Raptor	3900	13.25	4.0	.759
	4000	13.25	4.0	.775	640

(1) Except Heavy Duty Payload Package.

(2) With Heavy Duty Payload Package only.

SPRING SPECIFICATIONS — REAR MAIN LEAF

Comb. Rating @ Ground (lbs.)	Number of Leaves	Total Thickness @ Pad (in.)	Length (in.)	Width (in.)	Deflection Rate (lbs. per in./ spring)
3500	2 + Auxiliary	1.623	64.5	3.0	190/276
3700	2 + Auxiliary	1.67	64.5	3.0	205/300
3850	2 + Auxiliary	1.86	64.5	3.0	203/400

F-150 and F-150 SVT Raptor

Technical Specifications cont'd

2011

F-150 and
F-150 SVT Raptor

Tires and Wheels

TIRE SPECIFICATIONS

Size	Rim Width (in.)	Section Width (in.)	Static Loaded Radius (in.)
P235/75R17 A/T BSW	7.5	9.65	13.90
P255/65R17 A/S OWL	7.5	10.24	13.70
LT245/75R17 A/T BSW ⁽¹⁾	7.5	9.96	14.60
P265/60R18 A/S OWL	7.5	10.51	13.93
P265/70R17 A/T OWL	7.5	10.90	14.20
P275/65R18 A/T OWL	7.5	10.78	14.25
LT275/65R18 A/T OWL	7.5	10.78	14.80
P275/55R20 A/T OWL	8.5	11.18	14.40
P275/55R20 A/S OWL	8.5	10.80	14.30
P275/45R22 A/S BSW	9.0	10.80	14.70
LT315/70R17 (SVT Raptor)	8.5	11.80	16.14

(1) Heavy Duty Payload or Off-Road Package (XLT) only.

WHEEL SPECIFICATIONS

Wheel Type	Wheel Size (in.)	Inset (in./mm)	No. of Studs	Bolt Circle (in./mm)	Maximum Wheel Capacity Load (lbs.)
Grey Styled Steel	17 x 7.5	1.73/44	6	5.3/135	2025
Grey Styled Steel – 7-lug	17 x 7.5	1.73/44	7	5.8/150	2400
Machined Aluminum – 7-lug	17 x 7.5	1.73/44	7	5.8/150	2400
Machined Aluminum	17 x 7.5	1.73/44	6	5.3/135	2025
Machined Aluminum with Painted Accents	17 x 7.5	1.73/44	6	5.3/135	2025
Cast Aluminum Painted and Machine Finish (SVT Raptor)	17 x 8.5	1.73/44	6	5.3/135	2229
Machined Aluminum	18 x 7.5	1.73/44	6	5.3/135	2025
Bright Aluminum	18 x 7.5	1.73/44	6	5.3/135	2025
Chrome-Clad Aluminum	18 x 7.5	1.73/44	6	5.3/135	2025
7-spoke Aluminum with King Ranch Center Cap	18 x 7.5	1.73/44	6	5.3/135	2025
Machined Aluminum with Painted Accents	18 x 7.5	1.73/44	6	5.3/135	2025
Chrome-Clad Aluminum	20 x 8.5	1.73/44	6	5.3/135	2025
6-spoke Premium Painted Aluminum	20 x 8.5	1.73/44	6	5.3/135	2025
6-spoke Machined Aluminum	20 x 8.5	1.73/44	6	5.3/135	2025
Polished Aluminum	20 x 8.5	1.73/44	6	5.3/135	2025
Premium Painted Aluminum	20 x 8.5	1.73/44	6	5.3/135	2025
Forged Polished Aluminum with Painted Accents	22 x 9.0	1.73/44	6	5.3/135	NA
Steel Spare	17 x 7.5	1.73/44	6	5.3/135	2100
Steel Spare	18 x 7.5	1.73/44	6	5.3/135	2100

NA = Information not available at time of printing

F-150 and F-150 SVT Raptor

Technical Specifications cont'd

Transfer Case

TRANSFER CASE SPECIFICATIONS

Make and Model	Manual Shift-On-the-Fly (MSOF), Electric Shift-On-the-Fly (ESOF)
Type	2-Speed Planetary Gears
Lubricant Capacity (qt.)	1.3 – 1.5 liters
Gear Ratio – High	1.00:1
Gear Ratio – Low	2.64:1
Case Material	Magnesium

AUTOMATIC TRANSMISSION SPECIFICATIONS

Make/Type	Ford 6-Speed Automatic Overdrive (6R80E)
Engine	3.7L 4V V6, 5.0L 4V V8, 6.2L 2V V8, 3.5L 4V V6
Ratios (to 1):	
1st	4.17
2nd	2.34
3rd	1.52
4th – OD	1.14
5th	0.86
6th	0.69
Reverse	3.40
Converter Size & Type	260mm 155K (Single-stage Conventional)
Converter Stall Ratio	2.30
Lubricant Capacity (qt.)	12.0
Planetary	Simple and Ravigneaux
Helical Gears	All
Oil Cooler	Refer to chart on page 88
Turbine Speed Sensor System	Yes
Fully Electronic Shift Scheduling	Yes
Weight (With Fluid)	211 lbs. (4x2)/208 lbs. (4x4)

F-150 and F-150 SVT Raptor

Special Applications

2011

Trailer Towing/Camper Information

NOTE: See the RV & Trailer Towing Guide, available as a printable PDF on **eSourceBook**, or the vehicle Owner's Guide for more information.

Completed Vehicle Weight

The weight of the completed vehicle with equipment installed (and second unit body, if applicable) must not exceed the Front GAWR, Rear GAWR or GVWR established by Ford. If sufficient weight is added such that the completed vehicle with a driver and more than one passenger would exceed Front GAWR, Rear GAWR or GVWR, it is the responsibility of the equipment installer to notify the customer of the appropriate use restrictions (i.e., that the user should limit occupancy of the vehicle to the driver and one passenger while the equipment is installed). The addition of ballast weight, placed rearward of the rear axle, may be required to prevent front end overloading or exceeding Front GAWR. If required, the ballast weight must be securely attached to the vehicle. For Ford completed vehicles of 10,000 lbs. GVWR or less, the weight of permanently attached equipment must not exceed the Total Accessory Reserve Capacity (TARC) as specified on the Safety Compliance Certification Label. Exceeding TARC will require recertification.

Front-end Wheel Alignment and Headlamp Aim

Front-end wheel alignment (toe) and headlamp aim may require adjustment after installation of equipment, and is the responsibility of the equipment installer. Failure to reset front wheel alignment may cause premature, uneven tire wear. If required, reset to chassis manufacturer's specifications found in the Ford Shop Manual.

Electrical Connections

Installation of any inductive load devices (i.e., electric motors, electric clutches for clutch pumps, etc.) **MUST NOT** be connected to OEM wiring or fuse panels. Power for such devices should be taken directly from the battery or starter motor relay power terminal. Control of these devices should be achieved via relays. No direct current path should exist between OEM wiring and the installed load that is not filtered by the battery. These recommendations are intended to reduce or eliminate any induced reverse voltage into the OEM circuitry.

Warranty

The Normal Ford New Vehicle Limited Warranty applies to vehicles with **accessories** installed in accordance with these guidelines. Consult your Ford dealer or the Owner's Guide for any further questions.